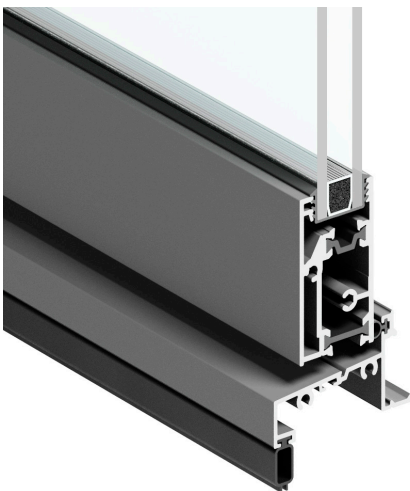


# ComfortSmart Hybrid Wideline Awning Windows

**A&L**  
WINDOWS | DOORS

**The ComfortSmart Hybrid is a newly developed Hybrid Series that uses A&L's Standard frames with our inline reveal and an enhanced Thermally Broken Awning Sash for adaptability and compatibility with our current ranges, while maintaining exceptional energy efficiency performance at a minimal cost.**



Thermally broken wideline awning sash is designed to meet the needs of the building industry and reach the new rating requirements with a minimum of fuss where possible

## Key features

### COMFORTSMART HYBRID SASH

Newly developed Thermally Broken Wideline Awning Sash allows you to achieve energy rating requirements without significant change to build cost.

### RANGE OF GLASS OPTIONS

Double glazing as standard for high energy performance with a range of privacy, acoustic and safety glass options.

### INLINE REVEAL AS STANDARD

Maintains our inline reveal system, providing superior energy efficiency & easy installation.

### COMPATIBLE WITH ALL RANGES

Complements our Standard product suite and accommodates mixed house lots.

### STANDARD SIZES TO SUIT BRICK OPENINGS

Eliminating the need to cut bricks on site and no change to the current A&L Size range or installation methods.

### COMPATIBLE WITH ALL BUILDING TYPES

Render, brick and block work, precast panels and lightweight construction.

### FULLY COMPLIANT WITH AUSTRALIAN STANDARDS

Engineered and NATA tested for full compliance.

### DESIGNED WITH STYLE IN MIND

No unsightly visible drainage holes, screws or rivets.

### DURABLE POWDERCOAT FINISH

Available in a wide range of state specific colours.

### LOCKABLE HARDWARE

Supplied with factory fitted keyed lock as standard.

### BACKED BY THE A&L WARRANTY

10 years for non-moving parts, 3 years for moving parts, 1 year for glass.

### SCREENING SOLUTIONS AVAILABLE

Fly Screens available

### BUSHFIRE RATED

Certified up to BAL40 with appropriate screening solution.

### RESTRICTED OPENING

Winders compliant with fall prevention standard.

# ComfortSmart Hybrid Wideline Awning Windows

**A&L**  
WINDOWS | DOORS

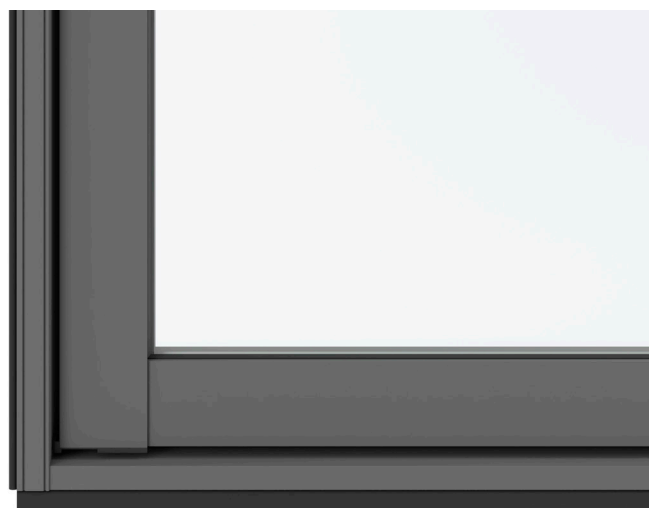
## Specifications

Product	Thermally Broken Wideline Awning Sash
Product Series	ComfortSmart Hybrid
Frame Profile	45mm x 20mm
Sill Options	N/A
Max Frame	2315mm high
Max Sash	2315 high x 900mm wide Max weight 80kgs
Sash Profile	Stiles – 37mm, bottom rail – 45mm, top rail – 45mm
Glazing	18mm Double glazing only
Bal Rating	BAL29 DTS*
Seal Type	QEZ seal
Colour Options	Black, Monument, Surfmist, White, Woodland Grey, Precious Silver, Dune and Jasper
Screen Options	Flyscreens – Available in a range of mesh options
Hardware Options	Restricted winder – Colour matched winder as standard
Installation Options	By builder
Warranty	10-year warranty

For full range of configurations and standard sizes refer to the standard size and range charts.

## Performance

Acoustic Performance	
Performance Criteria	Glass Type
RW32	Double glazing – 6/8Ar/4
Wind & Water Performance	
Performance Criteria	Rating
SLS	800Pa
ULS	2000Pa
Water	200Pa
N rating	N3 Corner
Thermal Performance	
Performance Criteria	Rating
Double Glazed Uw Range	2.3 – 3.4
Double Glazed SHGC Range	0.24 – 0.53



Thermally broken wideline awning sash allows you to achieve energy rating requirements without significant change to build cost.

# ComfortSmart Hybrid Wideline Awning Windows

**A&L**  
WINDOWS | DOORS

## Hardware



Awning Winder – Colour matched as standard